



10A

TECHNICAL SPECIFICATION FOR ALKALINE MANGANESE BATTERY

PREPARED BY

APPROVED BY

DATE January 3, 2002

SPEC.NO.: REF----R23----0102

1.Other name for the same type

L1022 10A

2.Chemical SystemAlkaline Zinc—Manganese battery (+) Zn|KOH|MnO₂(-)**3.Nominal Voltage:** 9.0V**4.Average Weight:** 6.40g**5.Nominal Capacity:** 57mAh

(continuous discharge at 20±2℃ under 0.10mA discharge current to 5.40V voltage)

6.Appearance Metal Can**7.Electrical Characteristics:**

7.1 Off—load Voltage:

New Battery≥9.05V

After 12 Months (Room Temp.)≥9.00V

7.2 Discharge Time(continuous discharge at 20±2℃ under 15KΩ discharge load to 5.40V voltage)

New Battery≥80 hours

After 12 Months (Room Temp.)≥72 hours

7.3 Over—discharge Characteristic

Condition: 15KΩcontinuous discharge at 20±2℃&65±20%R.H.

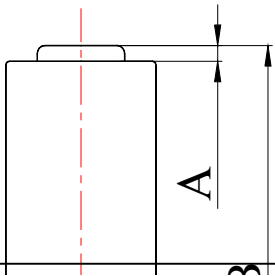
Period: 48hours

Characteristic: No deformation is over 0.20mm of the nominal dimension,
and no visual electrolyte leakage

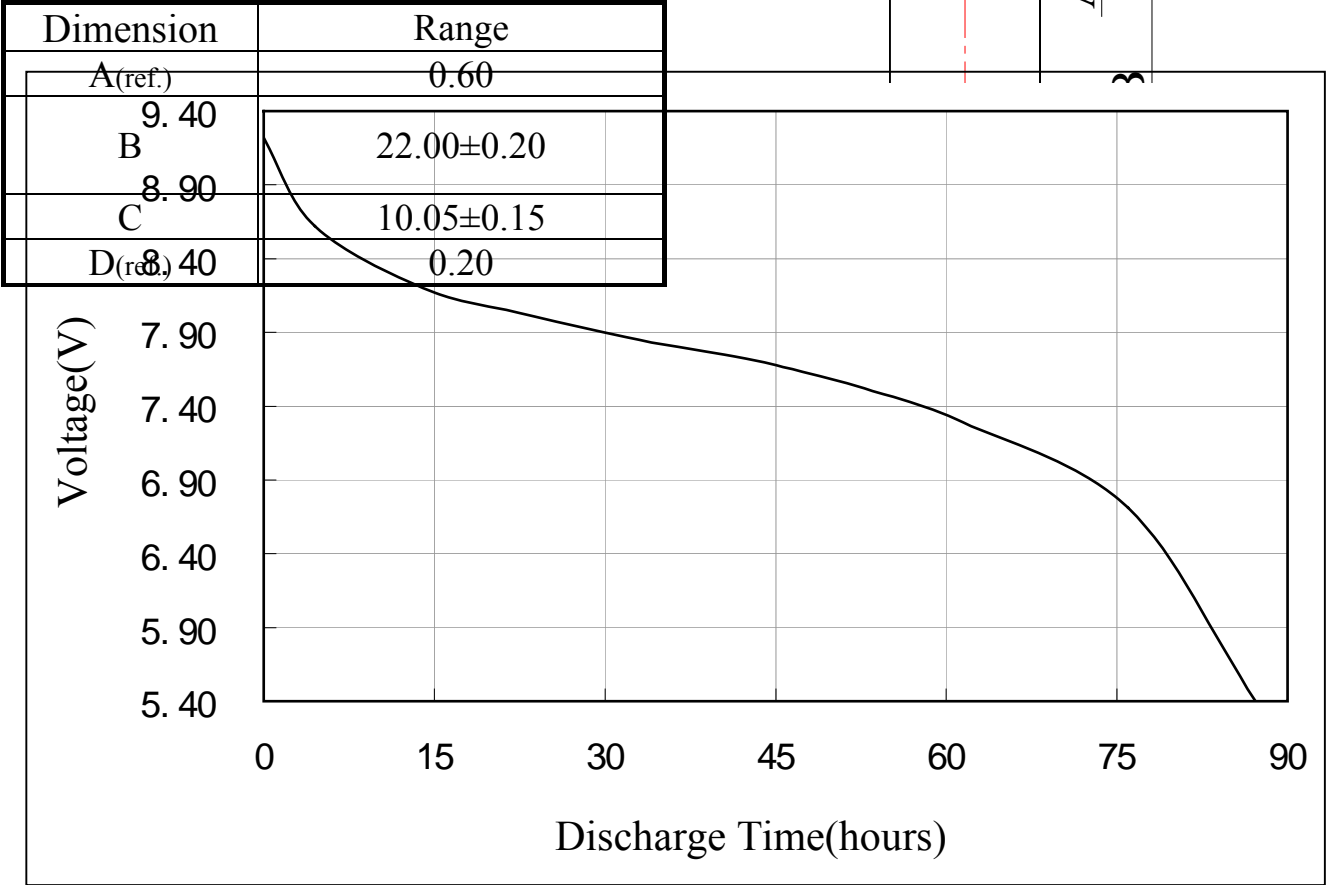
8.Dimensions:

Nominal Dimension: $\varnothing 10.30 \times 22.20$

(Unit: mm)



9. Typical Discharge Characteristics



(continuous discharge at $20 \pm 2^\circ\text{C}$ under $15\text{K}\Omega$ discharge load to 5.40V voltage)

10. Mark:

The following message will be printed or stamped on the body of the battery:

10.1 Designation: 10A□L1022 etc.

10.2 Manufacturer's name:

10.3 Trademark: DPOWER.

10.4 Nominal Voltage: 9V.

10.5: Pole: “+” and “-”.

10.6 Warning: May explode or leak if charged or disposed of in fire.

11. Caution for use :

11.1 There are risks of electrolyte leakage or causing damage to the device if the battery is charged;

11.2 The battery shall be installed with “+” and “-” in correct position;

11.3 Short-circuiting and heating the battery □ disposing of the can must not be permitted.

—————END—————